

Legal White-tailed Bucks

in antler restriction counties

(Refer to Outdoor Annual)

A LEGAL BUCK DEER is defined as having a hardened antler protruding through the skin **AND**:

- at least one unbranched antler; **OR**
- an inside spread measurement between main beams of 13 inches or greater.

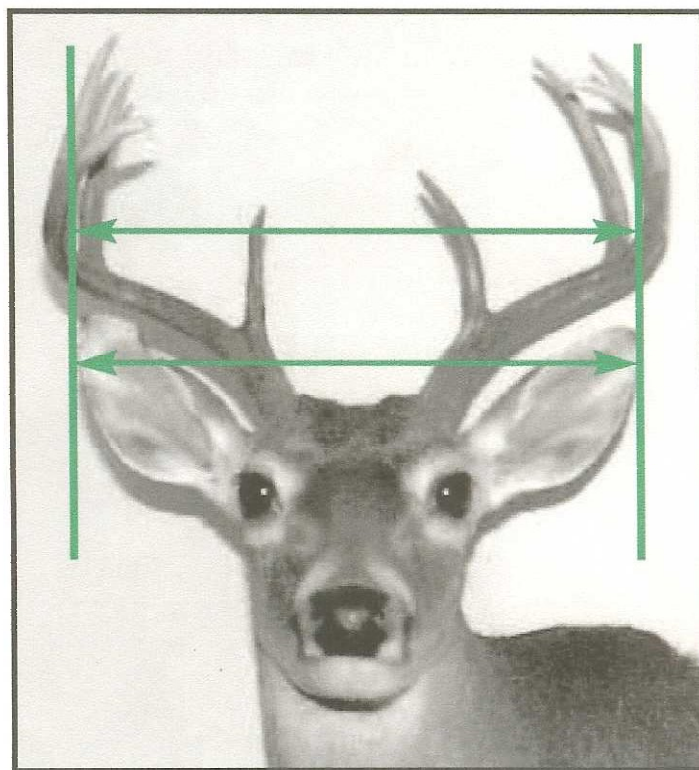
Bag Limit Two Bucks: No more than one buck may have an inside spread of 13 inches or greater.

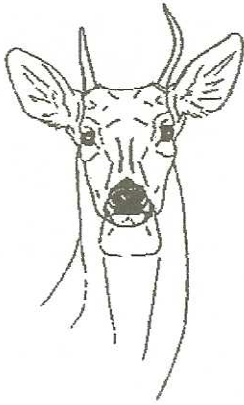


How do you determine if a buck has an inside spread measurement of 13 inches or greater?

The distance from ear-tip to ear-tip on a buck with ears in the alert position measures approximately 13 inches.

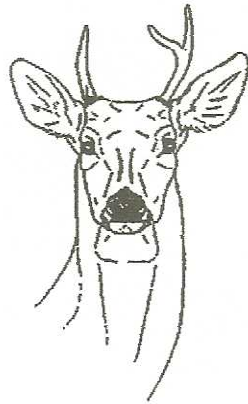
The inside spread on this buck is exactly 13 inches.





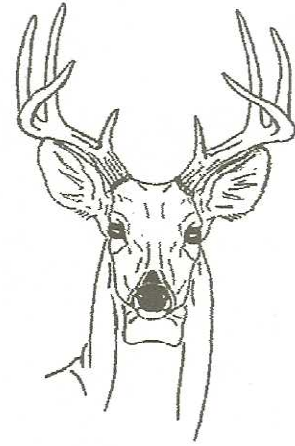
LEGAL

at least one unbranched antler



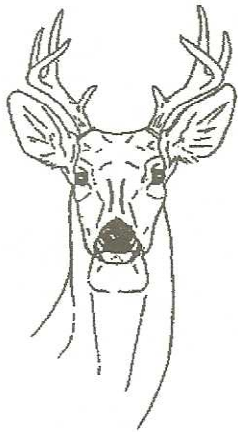
LEGAL

at least one unbranched antler



LEGAL

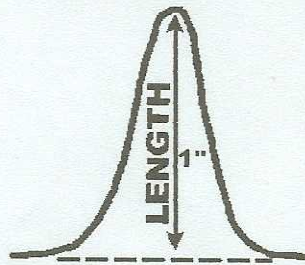
inside spread of 13 inches or greater



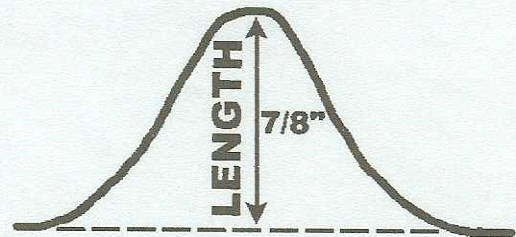
ILLEGAL

this buck meets none of the criteria

DEFINITION OF A POINT



LEGAL POINT



NOT A POINT

A point is a projection that extends at least one inch from the edge of a main beam or another tine. The tip of the main beam is also a point.